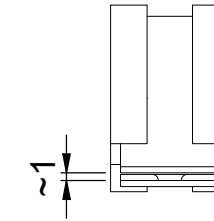
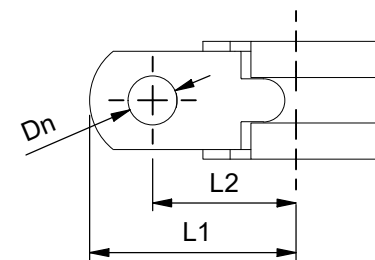
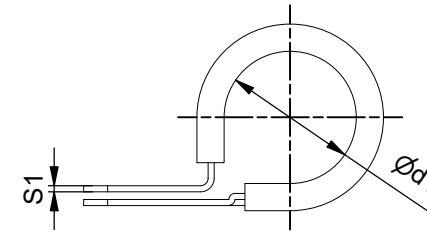
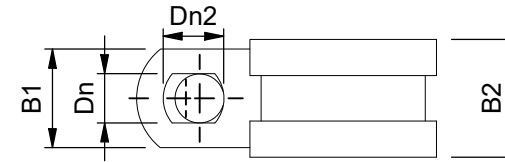
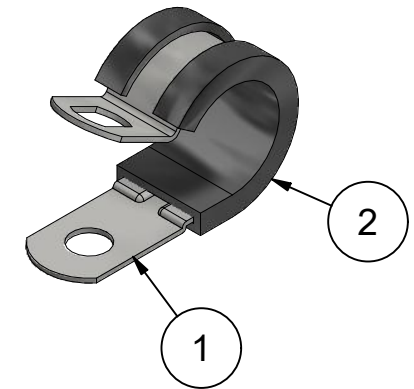



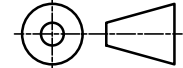
SIZES										
MPC Item W1:	MPC Item W5:	Ød1:	ØD1:	L1:	L2:	B1:	B2:	Dn:	Dn2:	S1:
LKD1500	LKD5700	3,2	4,8	19,9	11,6	13	16	6,5	8	0,8
LKD1501	LKD5701	4,8	6,4	20,7	12,4	13	16	6,5	8	0,8
LKD1502	LKD5702	6,4	7,9	21,5	13,2	13	16	6,5	8	0,8
LKD1503	LKD5703	7,9	9,5	22,3	14,0	13	16	6,5	8	0,8
LKD1504	LKD5704	9,5	11,1	23,1	14,8	13	16	6,5	8	0,8
LKD1505	LKD5705	11,1	12,7	24,1	15,8	13	16	6,5	8	1,0
LKD1506	LKD5706	12,7	14,3	24,9	16,6	13	16	6,5	8	1,0
LKD1507	LKD5707	14,3	15,9	25,7	17,4	13	16	6,5	8	1,0
LKD1508	LKD5708	15,9	17,5	26,5	18,2	13	16	6,5	8	1,0
LKD1509	LKD5709	17,5	19,0	27,3	19,0	13	16	6,5	8	1,0
LKD1510	LKD5710	19,0	20,6	28,0	19,7	13	16	6,5	8	1,0
LKD1511	LKD5711	20,6	22,2	28,8	20,5	13	16	6,5	8	1,0
LKD1512	LKD5712	22,2	23,8	29,6	21,3	13	16	6,5	8	1,0
LKD1513	LKD5713	23,8	25,4	30,4	22,1	13	16	6,5	8	1,0
LKD1514	LKD5714	25,4	27,0	31,4	23,1	13	16	6,5	8	1,2
LKD1515	LKD5715	27,0	28,6	32,2	23,9	13	16	6,5	8	1,2
LKD1516	LKD5716	28,6	30,2	33,0	24,7	13	16	6,5	8	1,2
LKD1517	LKD5717	30,2	31,8	33,8	25,5	13	16	6,5	8	1,2
LKD1518	LKD5718	31,8	33,3	34,6	26,3	13	16	6,5	8	1,2
LKD1519	LKD5719	33,3	34,9	35,4	27,1	13	16	6,5	8	1,2
LKD1520	LKD5720	34,9	36,5	36,2	27,9	13	16	6,5	8	1,2
LKD1521	LKD5721	36,5	38,1	37,0	28,7	13	16	6,5	8	1,2
LKD1522	LKD5722	38,1	41,0	37,8	29,5	13	16	6,5	8	1,2
LKD1526	LKD5726	41,0	44,5	39,2	30,9	13	16	6,5	8	1,2
LKD1523	LKD5723	44,5	47,0	41,0	32,7	13	16	6,5	8	1,2
LKD1528	LKD5728	47,0	51,0	42,2	33,9	13	16	6,5	8	1,2
LKD1524	LKD5724	51,0	54,0	44,2	35,9	13	16	6,5	8	1,2
LKD1525	LKD5725	54,0	60,0	45,7	37,4	13	16	6,5	8	1,2
LKD1529	LKD5729	60,0	65,0	48,7	40,4	13	16	6,5	8	1,2
LKD1527	LKD5727	65,0		51,2	42,9	13	16	6,5	8	1,2
LKD1530	LKD5730	74,0		55,4	37,4	13	16	6,5	8	1,2
LKD1531	LKD5731	110,0		73,7	65,4	13	16	6,5	8	1,2



Delivery form ( 1 : 1 )



Item	Qty	Description	Material
1	1	Clamp band	Steel Zn plated or aisi 316
2	1	Rubber protection profile	Rubber EPDM Shore A 65° ±5° Black

		© 2017 MPC INDUSTRIES BV, developed and designed by MPC INDUSTRIES BV		
		General Tolerances: according to: DIN 2768-vL SURFACE TREATMENT AND OR PROTECTION:		
<small>NOTICE TO PERSONS RECEIVING THIS DRAWING AND/OR TECHNICAL INFORMATION: MPC Industries BV claims proprietary rights to the material disclosed hereon. This drawing and/or technical information is issued in confidence for engineering information only and may not be reproduced or used to manufacture anything shown or referred to hereon without direct written permission from MPC Industries BV to the user. This drawing and/or technical information is the property of MPC Industries BV and is loaned for mutual assistance to be returned when its purpose has been served. THIS DRAWING AND/OR TECHNICAL INFORMATION IS THE PROPERTY OF MPC INDUSTRIES BV DO NOT SCALE FROM DRAWING.</small>		Material:	Art.No: SL	Mass: N/A
		Filename: SL-Datasheet.dwg		Sheet: 1 / 1
		Third angle projection: 		Part number: <b>SL</b>
Drawn by: M. Wiersma	Creation date: 15/05/2020	Description: MPC SL Single lip fixing clip 13mm wide. band material W1 and W5, with rubber lining.		Revision: <b>A</b>
Checked by: R. Tirry	Checked date: 15/05/2020			Format: <b>A3</b>
Scale 1 : 1	Units: mm	Status: Released		
MPC Industries B. V. Badweg 38 8401 BL Gorredijk Postbus 225 8400 AE Gorredijk. Tel.: . 0513 465477 Fax.: 0513 465736				

Rev.	Datum	Omschrijving	ENGINEER
A	15/05/2020	Renewed Sheet and Changed ØD1 annotation in drawing view into Ød1	M. Wiersma
Revisie overzicht			