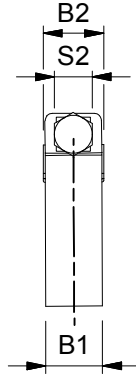
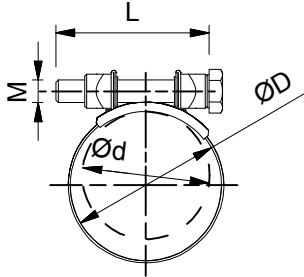
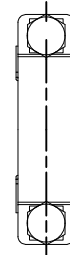
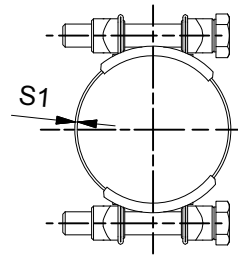
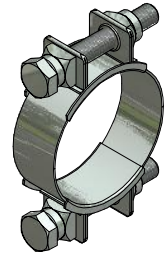


MPC TYPE "SB15"

Formula 1



Formula 2



Formula 1

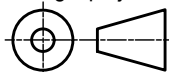
Clamping range	Claming range	Band width	Total width	Band Thickness	Height	Hexagon	head	srew
ØD	Ød	B1	B2	S1	H	M	L	S2
max.	min.	+/- 1	max	+0,2 -0,1	max.		max.	
20	23	15	17	0,6	17	M6	40	10
24	27	15	17	0,6	17	M6	40	10
28	31	15	17	0,6	17	M6	40	10
32	35	15	17	0,6	17	M6	40	10
36	39	15	17	0,6	17	M6	40	10
40	43	15	17	0,6	17	M6	40	10
44	47	15	17	0,6	17	M6	40	10
48	51	15	17	0,6	17	M6	40	10
52	55	15	17	0,6	17	M6	40	10
56	59	15	17	0,6	17	M6	40	10
60	63	15	17	0,6	17	M6	40	10
64	67	15	17	0,6	17	M6	40	10
68	71	15	17	0,6	17	M6	40	10

Formula 2

Clamping range	Claming range	Band width	Total width	Band Thickness	Height	Hexagon	head	srew
ØD	Ød	B1	B2	S1	H	M	L	S2
max.	min.	+/- 1	max	+0,2 -0,1	max.		max.	
60	66	15	17	0,6	17	M6	40	10
67	73	15	17	0,6	17	M6	40	10
74	80	15	17	0,6	17	M6	40	10
81	87	15	17	0,6	17	M6	40	10
88	94	15	17	0,6	17	M6	40	10
95	101	15	17	0,6	17	M6	40	10
102	108	15	17	0,6	17	M6	40	10
109	115	15	17	0,6	17	M6	40	10
116	122	15	17	0,6	17	M6	40	10
123	129	15	17	0,6	17	M6	40	10



Third angle projection:



Material:
W1; W4; W5

Part number:

SB 15 Clamp

Description:

MPC Industries SB 15 clamp

Revision:

Drawn by: gyula

Creation date: 9-5-2012

Scale 1:1

Units: mm

Format:

A4