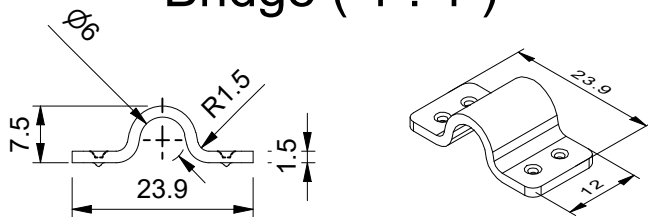


Bridge (1 : 1)



		© 2017 MPC INDUSTRIES BV, developed and designed by MPC INDUSTRIES BV		
		General Tolerances: according to: DIN 2768-vL SURFACE TREATMENT AND OR PROTECTION:	Commercial Drawing	
<small>NOTICE TO PERSONS RECEIVING THIS DRAWING AND/OR TECHNICAL INFORMATION: MPC Industries BV claims proprietary rights to the material disclosed hereon. This drawing and/or technical information is issued in confidence for engineering information only and may not be reproduced or used to manufacture anything shown or referred to hereon without direct written permission from MPC Industries BV to the user. This drawing and/or technical information is the property of MPC Industries BV and is loaned for mutual assistance to be returned when its purpose has been served. THIS DRAWING AND/OR TECHNICAL INFORMATION IS THE PROPERTY OF MPC INDUSTRIES BV DO NOT SCALE FROM DRAWING.</small>		Material: DD4210BR	Mass: 0,075 kg	
		Filename: DD4210BR.dwg		Sheet: 1 / 1
		Third angle projection:		Part number: DD4210BR
Drawn by: Gy.Kardos	Creation date: 28/06/2017	Description: MPC Industries DD clamp 210-230 mm, in W4 with bridge for spiralhose with right winded reinforcement.		
Checked by: M. Wiersma	Checked date: 01/07/2016			
Scale 1 : 2	Units: mm	Revision: A Format: A3		
Status: Released				
MPC Industries B. V. Badweg 38 8401 BL Gorredijk Postbus 225 8400 AE Gorredijk. Tel.: . 0513 465477 Fax.: 0513 465736				

Rev.	Date	Description	DESIGNER
A	18/07/2018	Drawing renewed	C.P. Dijkstra
Revision history			