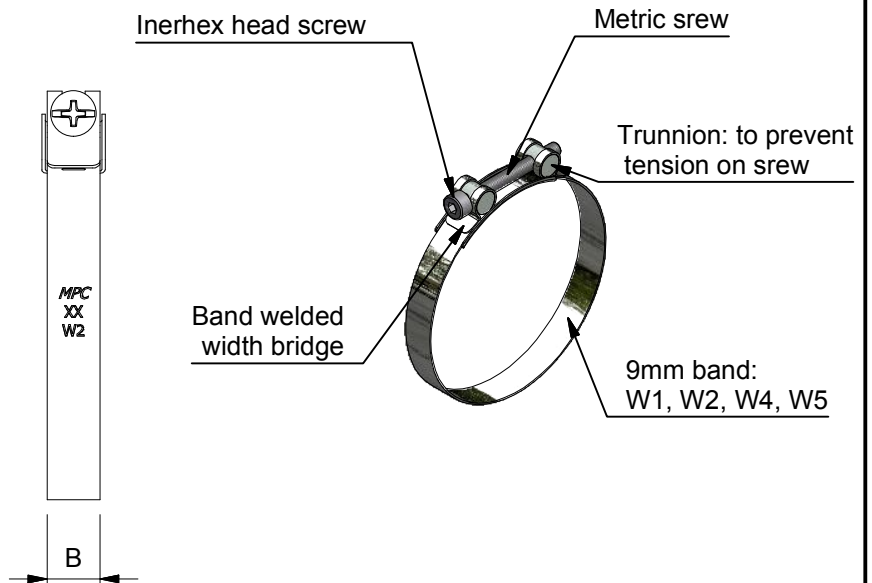
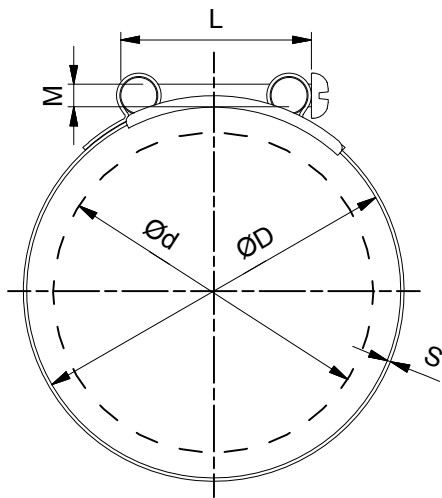


# MPC TYPE "MS"



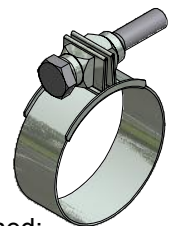
## SIZES

clamp size minimum:	clamp size maximum:	Band width:	Band Thickness	Screw size	Screw Length	Breaking Torque:
d	D	B1	S1	M	L	AD* In Nm
16	18	9	0,5	M4	25	3,8 Nm
17	19	9	0,5	M4	25	3,6 Nm
18	20	9	0,5	M4	25	3,6 Nm
21	23	9	0,5	M4	25	3,6 Nm
22	24	9	0,5	M4	25	3,6 Nm
23	25	9	0,5	M4	25	3,6 Nm
24	26	9	0,5	M4	25	3,6 Nm
25	27	9	0,5	M4	25	3,6 Nm
26	28	9	0,5	M4	25	3,6 Nm
27	29	9	0,5	M4	25	3,6 Nm
28	30	9	0,5	M4	25	3,6 Nm
29	31	9	0,5	M4	25	3,6 Nm
30	32	9	0,5	M4	25	3,6 Nm
31	33	9	0,5	M4	25	3,6 Nm
32	34	9	0,5	M4	25	3,6 Nm
33	35	9	0,5	M4	25	3,6 Nm
34	37	9	0,5	M4	30	3,6 Nm
36	39	9	0,5	M4	30	3,6 Nm
38	41	9	0,5	M4	30	3,6 Nm
40	43	9	0,5	M4	30	3,6 Nm
42	45	9	0,5	M4	30	3,6 Nm
44	47	9	0,5	M4	30	3,6 Nm
46	49	9	0,5	M4	30	3,6 Nm
48	51	9	0,5	M4	30	3,6 Nm
50	55	9	0,5	M4	35	3,6 Nm
53	58	9	0,5	M4	35	3,6 Nm
55	60	9	0,5	M4	35	3,6 Nm
58	63	9	0,5	M4	35	3,6 Nm
60	65	9	0,5	M4	35	3,6 Nm
63	68	9	0,5	M4	35	3,6 Nm
65	70	9	0,5	M4	35	3,6 Nm
68	73	9	0,5	M4	35	3,6 Nm
70	75	9	0,5	M4	35	3,6 Nm
73	78	9	0,5	M4	35	3,6 Nm
75	80	9	0,5	M4	35	3,6 Nm
78	83	9	0,5	M4	35	3,6 Nm

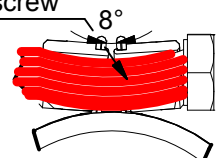
## Benefits of MS clamp:

- Super clamp design
- Metric screw
- Use of trunnion prevent tension on screw
- 9 mm band width
- Inerhex screw head: easy tooling
- Metric screw, different screw head possibility
- Welded band
- W1; W2; W4; W5

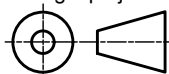
## SB clamp



SB clamp tightened: tension on screw



Third angle projection:



Material: W1; W2; W4; W5

Part number:

# MS Clamp

Description:

MPC Industries MS clamp

Revision:

Drawn by: gyula

Creation date: 08-May-12

Scale 1:1

Units: mm

Format:

# A4