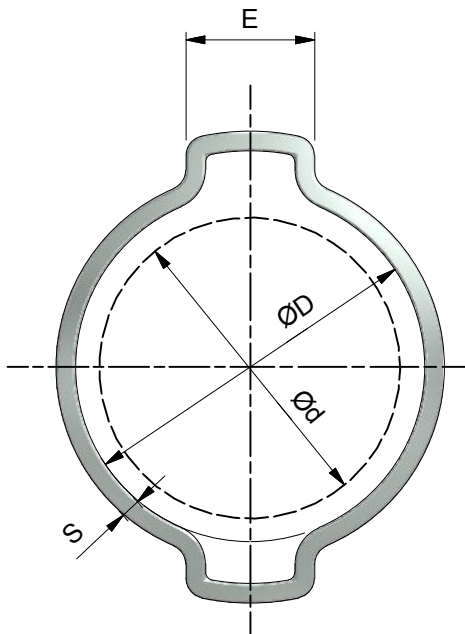


MPC TYPE "OKD"

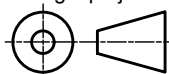


Material: cold drawn or cold rolled precision seamless steel tube according to DIN 2391 (GB3639-83) ZN plated.

SIZES				
clamp size	clamp size	Band	Band Thickness	Ear size
minimum:	maximum:	width:	W1	
d	D	B (±1.0)	S (±0,1)	E (Min.)
3	5	6	0,7	3,5
5	7	6	0,7	4
7	9	7	0,7	4,6
9	11	7	0,9	5,5
11	13	7	1	6
13	15	7,5	1	6,3
15	18	7,5	1,2	7
17	20	7,5	1,2	7,6
20	23	9	1,3	8,5
21	25	9	1,3	9,6
22	25	9	1,3	9,6
23	27	9	1,4	9,6
25	28	9	1,4	9,8
28	31	9,5	1,4	10
31	34	9,5	1,4	10,4
34	37	9,5	1,5	11
37	40	10	1,6	11,2
40	43	10	1,6	11,5
43	46	10	1,6	11,7



Third angle projection:



Material: Zinc plated, Mild Steel

Part number:

OKD clamp

Description:

MPC Industries OKD Clamp

Revision:

Drawn by: Martin

Creation date: 29-4-2015

Scale 1:1

Units: mm

Format:

A4